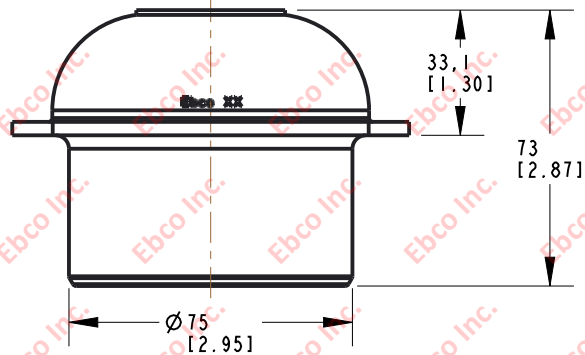
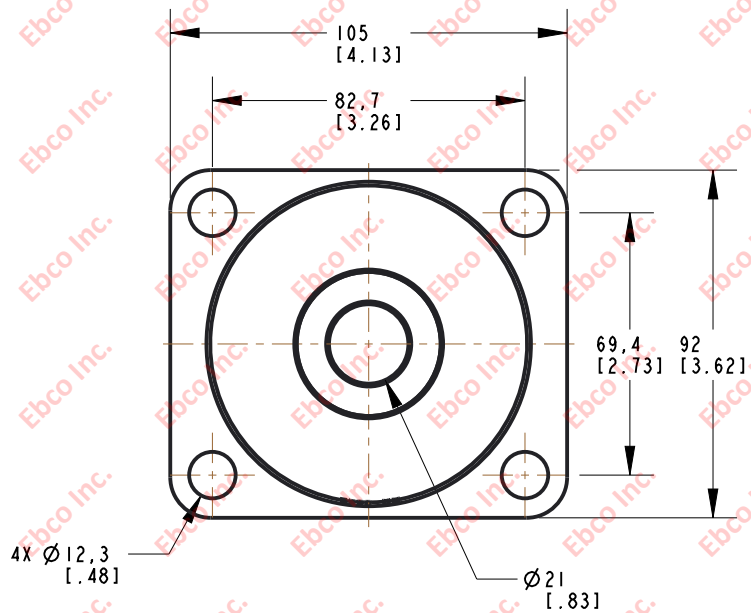
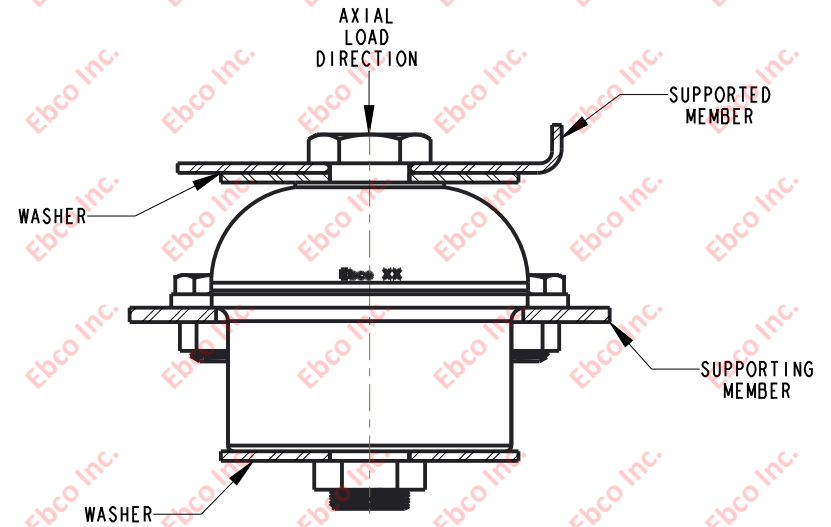


4820

DWG. NO.



INSTALLATION VIEW (Shown under no load)



SPECIFICATIONS

PART NUMBER		MAX. AXIAL DEFLECTION		MAX. AXIAL LOAD		TANGENTIAL STIFFNESS	
NATURAL RUBBER	NEOPRENE	in	mm	lb	N	lb/in	N/mm
4820-70	4820-80	0.20	5.08	370	1646	1542	270
4820-71	4820-81			460	2046	1917	336
4820-73	4820-83			700	3114	2917	511
4820-74	4820-84			825	3670	3438	602
4820-75	4820-85			1000	4448	4167	730
4820-76	4820-86			1325	5894	5521	967
4820-78	4820-88			2050	9119	8541	1496

*LOAD/DEFLECTION AS ASSEMBLED, SEE INSTALLATION VIEW

INSTALLATION DIMENSIONS

RECOMMENDED BOLT INFORMATION				TIGHTENING TORQUE			
ENGLISH		METRIC		CLAMP LOAD		TIGHTENING TORQUE	
SIZE	GRADE	SIZE	CLASS	lb	N	ft-lb	N-m
3/4	5	M18	9.8	21300	94747	266	361

WASHER SPECIFICATIONS					
O.D.		I.D.		THICKNESS	
in	mm	in	mm	in	mm
3	76.2	0.83	21.082	.15	3.048



TITLE: 4820
 THE INFORMATION CONTAINED IN THIS DRAWING IS THE SOLE PROPERTY OF EBCO ANY REPRODUCTION IN PART OR AS A WHOLE WITHOUT THE WRITTEN PERMISSION OF EBCO IS PROHIBITED.
 TOLERANCES PER RMA STANDARD A3
 REV. F
 DATE: 06-07-21
 UNITS: mm [INCH]
 1330 HOLMES RD. ELGIN, IL 60123

SPECIFICATIONS SUBJECT TO CHANGE